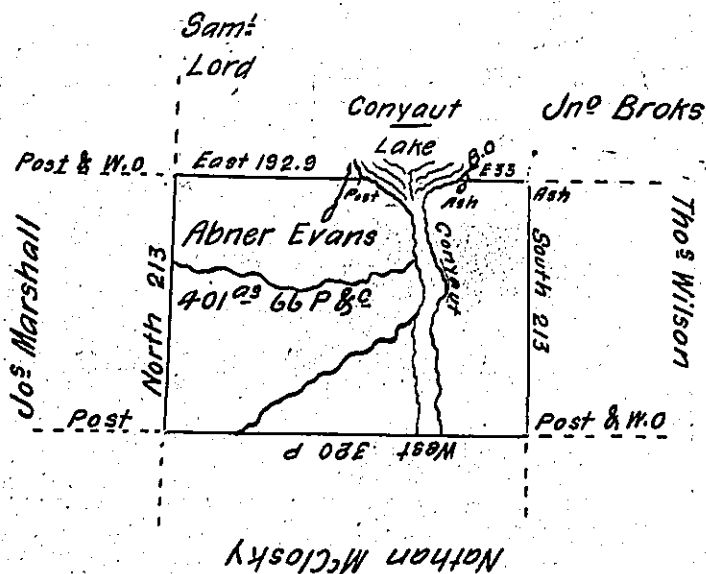


Courses of the Lake

S 50½ E 10
 East 30
 N 68 E 49
 S 5 E 12
 101 P



Situate on and including the outlet of Conyaut Lake in ALLY County Containing
 401.95 66 P. and allowance of six P. Cent for Roads & C. Surveyed the 20th
 day of October 1794. In pursuance of his Improvement Bearing date
 the 25th day of June 1793.

Wm Power Dy. Sr.

To Daniel Brodhead Esq^r
 Surveyor General

IN TESTIMONY that the above is a copy of the original remaining on file in
 the Department of Internal Affairs of Pennsylvania, made
 conformably to an Act of Assembly approved the 16th day of
 February, 1833, I have hereunto set my Hand and caused
 the Seal of said Department to be affixed at Harrisburg,
 this twenty sixth day of July 1904.

John P. Brown
 Secretary of Internal Affairs.